














**Portofino**  
**101 Allen Street**  
**Hamilton QLD 4007**  
**(07) 3025 2100**

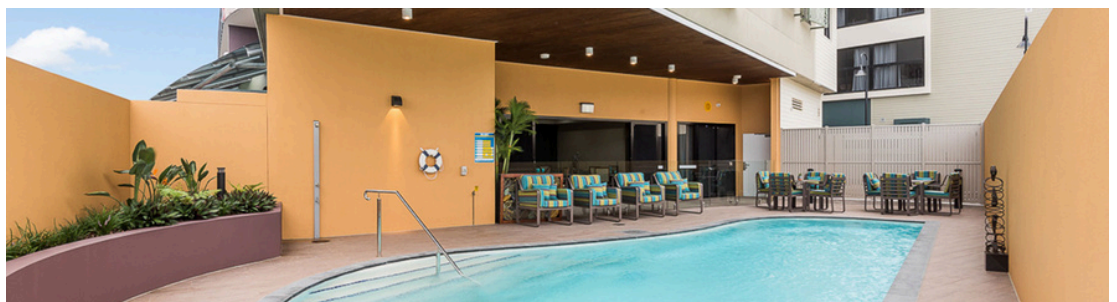
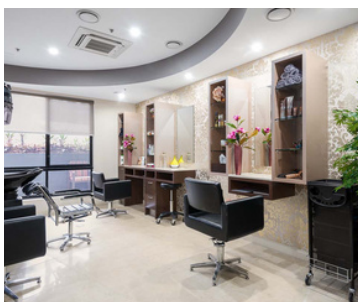


Portofino is a newly built aged care community offering the finest Apartments, Penthouses, and Single Aged Care Suites. Located in the heart of Hamilton's vibrant entertainment precinct, Portofino boasts stunning views of Brisbane City and its surrounds. With beautifully designed living spaces, dedicated daily support, and premium community amenities, Portofino represents the future of aged care.

For couples wishing to stay together, whether one or both require care, Portofino offers spacious two- and three-bedroom apartments. These thoughtfully designed residences provide flexibility with separate or shared sleeping arrangements and an extra room for guests. Each apartment features an open-plan living area, a generous ensuite, and a well-appointed kitchen for a comfortable and independent lifestyle. Please note, Portofino is a non-smoking home.

-  Café - Alfresco Terrace
-  Fitness Centre
-  Foxtel
-  Hairdressing Salon
-  Inground Pool
-  Internal Piazza
-  On-Site Pharmacy
-  Secure Car Parking
-  Servizi Concierge Service
-  Spacious Lobby
-  Spacious Rooms
-  Spectacular views
-  Theatre

*Portofino offers older Australians the ability to live in the comfort of a luxury apartment while being supported as needed, by the very best 24-hour specialist care.*





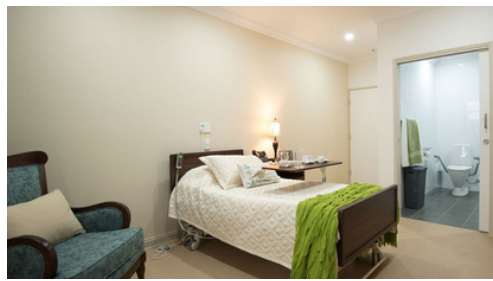
**Vista Special Care Suite**  
**RAD Price: \$750 000\***

- 24 - 25m<sup>2</sup>
- Single Room
- Private Ensuite
- Kitchenette
- Secure environment via keypad entry
- Access to protected outdoor area and activities room.



**Executive Suite**  
**RAD Price: \$1 106 000\***

- 42 - 52m<sup>2</sup>
- Spacious single suites
- Located on level 3
- Spacious Ensuites
- Kitchenette
- Semi-private balcony or terrace access with views
- Kitchenette
- Can accommodate couples



**Vista Suite**  
**RAD Price: \$750 000\***

- 23 - 27m<sup>2</sup>
- Single Suite
- Comfortable large space
- Private Ensuite
- Kitchenette



**2 Bedroom Apartment**  
**RAD Price: \$1 370 000\***

- 128 - 252m<sup>2</sup>
- Luxurious apartment
- Main Bedroom has a generous ensuite
- Second Bedroom provides an option for separate sleeping arrangements or a spare room for visitors
- Well-appointed kitchen
- Open plan living room



**Premium Suite**  
**RAD Price: \$895 000\***

- 23 - 27m<sup>2</sup>
- Single Suite
- Large Ensuite
- Kitchenette
- Communal balcony access with a lovely outlook



**3 Bedroom Apartment**  
**RAD Price: \$2 055 000\***

- 128 - 252m<sup>2</sup>
- Luxurious apartment
- Main Bedroom has a generous ensuite and walk in wardrobe.
- Second Bedroom provides an option for separate sleeping arrangements or a spare room for visitors.
- Well-appointed kitchen
- Generous balcony with extensive views of surrounding vistas and the Gateway Bridge.



**Penthouse - 4 bedroom**  
**RAD Price: \$2 528 000\***

- 329 - 404m<sup>2</sup>
- Four Bedrooms
- Amazing Views from broad sweeping balconies.
- Well-appointed kitchen
- Open plan living
- Large ensuite off the main bedroom.



\*Prices may change without notice



**SCAN ME**

Scan the QR Code to fill out the **Contact Us** form and Client Relations will get back to you.

Ver 2.21 as of 5.2.2025