







Classic Single

Your Suite

The very homely and comforting Classic Single provides a comfortable abode for a single person. The 15m² - 18m² suite has their own private ensuite and patio.

-  **Single Room**  **Patio**
-  **Private Ensuite**  **15-18m²**

Our Services

Esida caters for a range of care needs including extensive care and palliative care. We also look after more independent residents who have the peace-of-mind knowing help and nursing care are available when needed. Qualified nursing and care staff provide loving care and understanding 24 hours a day, seven days a week. Our approach to person-centered care enables us to meet each resident's individual needs with respect, love, dignity and independence.

Why Esida?

Esida is a caring, friendly aged care residence that has been a part of the community for over 40 years. The popular Carindale and Mt Gravatt Central Shopping areas are conveniently located nearby. A bus service just outside Esida can take you to the surrounding suburbs or the city within minutes. Hospitals and services are nearby and the city is just 10km away.

Esida is a non-smoking home.

PAYMENT TYPE METHOD EXAMPLES

| | |
|--|------------------|
| COMBINATION 1 | |
| Maximum Refundable Accommodation Deposit (RAD) | \$317,830 |
| COMBINATION 2 | |
| 75% RAD | \$238,373 |
| 25% DAP | \$12.97 |
| COMBINATION 3 | |
| 50% RAD | \$158,915 |
| 50% DAP | \$25.95 |
| COMBINATION 4 | |
| 25% RAD | \$79,458 |
| 75% DAP | \$38.92 |
| COMBINATION 5 | |
| Maximum Daily Accommodation Payment (DAP) | \$51.89 |

Classic

4/1/2019

"Truly person-centred care"

Esida cares for 78 residents and offers both private and shared accommodation. There are several large common areas for residents to enjoy lifestyle activities and companionship. The open-air setting lends itself to a relaxed social atmosphere between staff and residents.

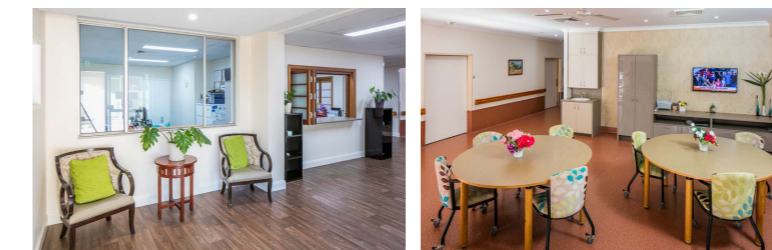
Activities

Residents have access to a range of activities and outings including movies, concerts, exercise classes, games, church services, theme days and happy hour.

Our café, lounges and communal areas provide relaxing meeting places where residents can have a nice "cuppa" with family and friends.

The large entertainment area on the lower ground floor is where Esida's physiotherapists hold regular exercise classes.

The hair salon is very popular and there is access to email and Internet services to stay in touch with family and friends.



NOTES & QUESTIONS

For any questions or clarifications, please contact us at:
info@vacenti.com.au or call
(07) 3422 9300

Vacenti put people first. Every employee is motivated by our PERSON approach, whether helping you to enjoy a more independent lifestyle or providing assistance, care and support to help you live well. Respect for your rights and individual needs is paramount.